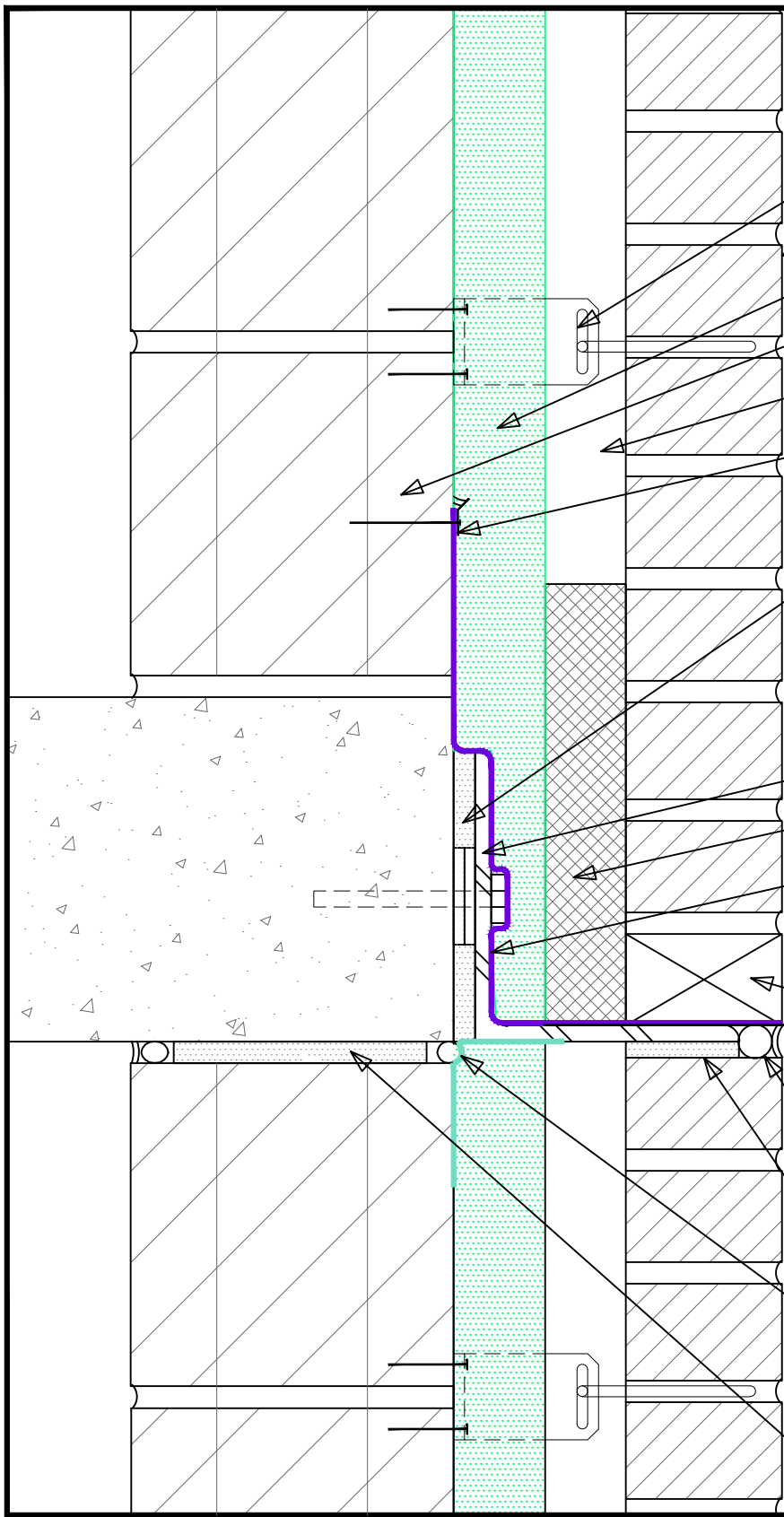


WARNING: THIS LINTEL LOCATION AND ATTACHMENT DETAIL CAN RESULT IN HEAT LOSS AND CONDENSATION IN COLD CLIMATES. SEE AB-CMU-10 FOR COLD CLIMATE DETAIL

- MASONRY ANCHOR
- BRICK VENEER
- WALLTITE® US
- CMU BACKUP WALL
- CAVITY
- TERMINATION BAR & MASTERSEAL® NP-150
- APPROVED SPF SEALANT AT SHIM SPACE BEHIND HUNG LINTEL TO SUPPORT FLASHING (IF REQUIRED)
- HUNG LINTEL SYSTEM
- WEEP BAFFLE
- ENERSHIELD® TWF MEMBRANE
- WEEP
- METAL DRIP EDGE FLASHING (IF REQUIRED)
- BACKER ROD & SEALANT
- COMPRESSIBLE FILLER
- TF MEMBRANE W/ BACKER ROD TO CREATE A BELLOW FOR DEFLECTION
- COMPRESSIBLE FILLER



SKETCH: WALLTITE® US
RELIEVING ANGLE 1
CMU BU

BASF Corporation
1703 CROSSPOINT AVE, HOUSTON, TX 77054
1-888-900-FOAM
www.spf.basf.com

SKETCH NO:
AB-CMU-09

DATE: 08/01/2014

DISCLAIMER - BASF Corporation is not liable for any errors or omissions in design, detail structural capability, attachment details, shop drawings or the like, whether based upon the information provided by BASF Corporation or otherwise, or for any changes which the purchasers, specifiers, designers or their appointed representatives may make to BASF Corporation's published comments. DESIGN DETAIL IS FOR REFERENCE ONLY.