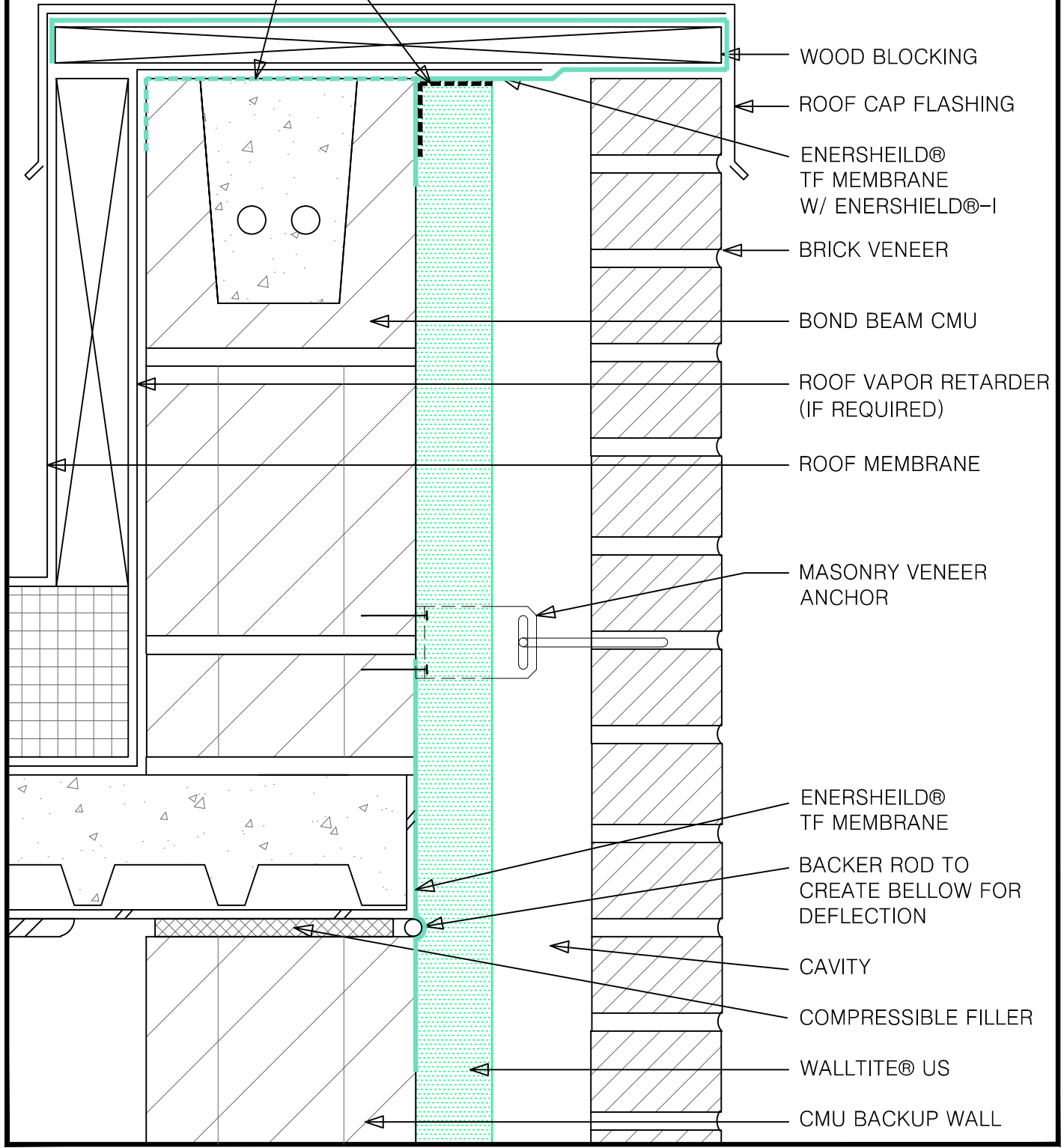


NOTE: IF BLOCKING IS NOT PRESENT AT TIME OF SPRAY FOAM & AIR BARRIER INSTALLATION, WRAP MEMBRANE OVER CMU & DOWN WALL 2" & INSTALL FOAM STOP (DASHED). CONNECTION TO TRANSITION STRIP IS BY OTHERS.



- WOOD BLOCKING
- ROOF CAP FLASHING
- ENERSHEILD® TF MEMBRANE W/ ENERSHEILD®-I
- BRICK VENEER
- BOND BEAM CMU
- ROOF VAPOR RETARDER (IF REQUIRED)
- ROOF MEMBRANE
- MASONRY VENEER ANCHOR
- ENERSHEILD® TF MEMBRANE
- BACKER ROD TO CREATE BELLOW FOR DEFLECTION
- CAVITY
- COMPRESSIBLE FILLER
- WALLTITE® US
- CMU BACKUP WALL

SKETCH: WALLTITE® US  
 ROOF DETAIL 2  
 CMU BU

**BASF Corporation**  
 1703 CROSSPOINT AVE, HOUSTON, TX 77054  
 1-888-900-FOAM  
 www.spf.basf.com

SKETCH NO:  
 AB-CMU-16

DATE: 08/01/2014

\*\*DISCLAIMER - BASF Corporation is not liable for any errors or omissions in design, detail structural capability, attachment details, shop drawings or the like, whether based upon the information provided by BASF Corporation or otherwise, or for any changes which the purchasers, specifiers, designers or their appointed representatives may make to BASF Corporation's published comments. DESIGN DETAIL IS FOR REFERENCE ONLY.\*\*