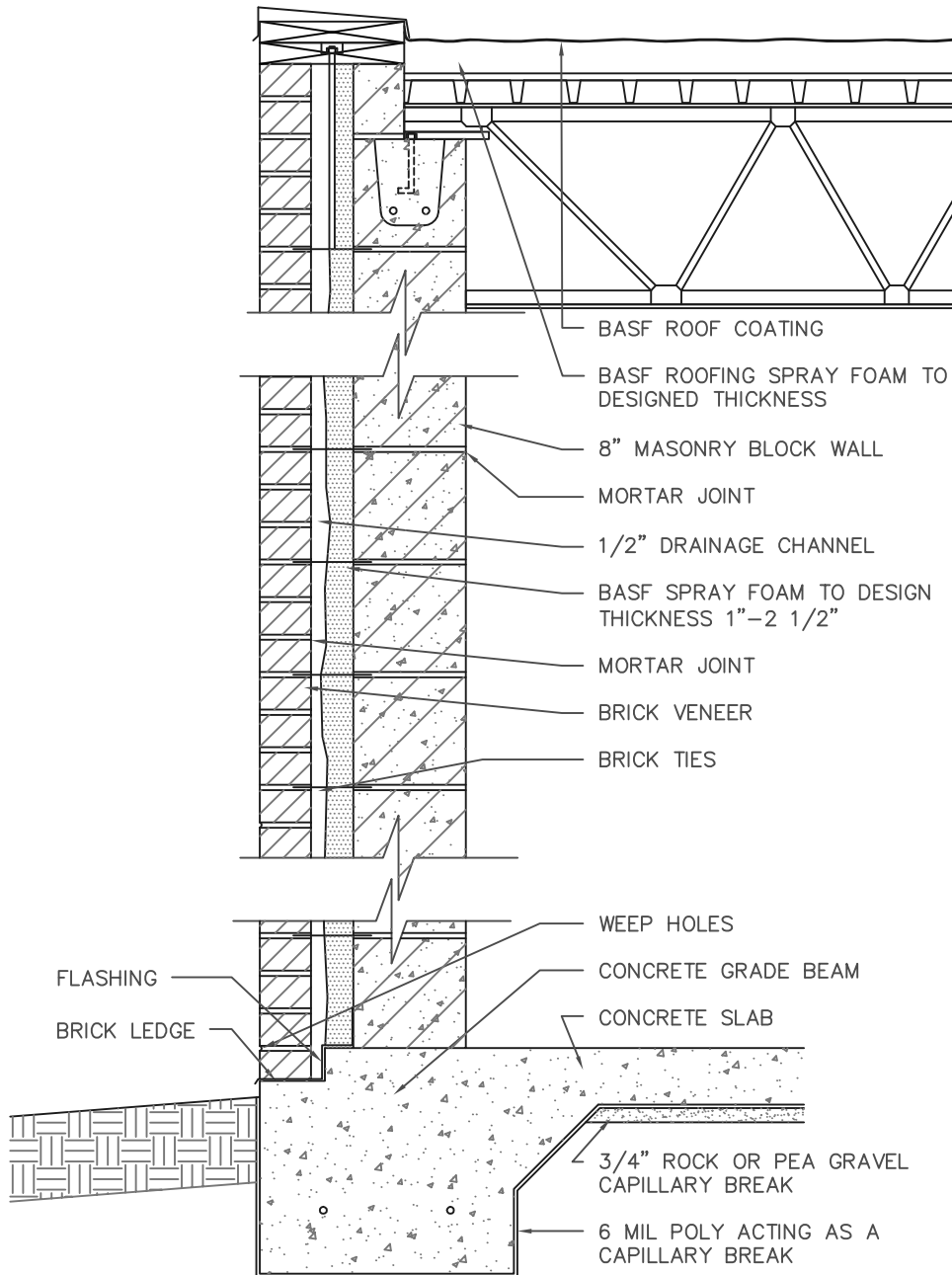


# Commercial Wall Detail

BASF Spray Foam applied to interstitial space between masonry wall with brick veneer



BASF Spray Foam Detail No. 10

This detail of a commercial masonry wall with brick veneer uses BASF Spray Foams to insulate the interstitial space between the two, which also acts as a drainage plane. This monolithic application strengthens as it seals. Additionally BASF Spray Foam and Coatings is use to insulate and protect the roof.